

| Total System Depth (mm) | Bracket / insulation Thickness (mm) | Thermal Performance (W/m ² K) | Acoustic Performance RW (db) | System Weight (Kg/m ²) |
|-------------------------|-------------------------------------|--|------------------------------|------------------------------------|
| 140 | 120 | 0.37 | 43 | 12.6 |
| 160 | 140 | 0.32 | 45 | 12.8 |
| 180 | 160 | 0.28 | 47 | 13.1 |
| 200 | 180 | 0.25 | 49 | 13.3 |
| 220 | 200 | 0.23 | 50 | 13.6 |

N14/3 SINUS EXTERNAL WALL PROFILE
GAUGE - 0.7mm
COATING - PROTEX APPROVED
END LAP - 150mm

PROTEX APPROVED - EXTERNAL MAIN FIXING
STAINLESS STEEL SELF DRILLING & SELF TAPPING
PAINTED / MOULDED HEAD
16mm Ø EDPM WASHER
PATTERN
SHEET ENDS - EVERY 3 NO. TROUGHS - 5 NO. FIXINGS
INTERMEDIATE SUPPORTS - EVERY 3 NO. TROUGHS - 5 NO. FIXINGS

PROTEX APPROVED - EXTERNAL STITCHER FIXING
STAINLESS STEEL SELF DRILLING & SELF TAPPING
PAINTED / MOULDED HEAD
16mm Ø EDPM WASHER
PATTERN
SIDE LAP TROUGH - 450mm CENTRES

PROTEX APPROVED - END LAP SEALANT
9mm * 3mm BUTYL TAPE / 4mm BEAD
LOCATION
1-NO. CONTINUOUS RUN. POSITIONED IN COMPRESSION ZONE AND 15mm FROM SHEET END

PROTEX APPROVED - SPACER SYSTEM
BRACKET DEPTH TO SUIT U-VALUE CALCULATIONS
MINIMUM DEPTH 120mm
PATTERN
MAX CLADDING RAIL CENTRE'S 1800mm
VERTICAL BAR CENTRE'S TYPICALLY 1600mm
VERTICAL BAR CENTRE'S TO SUIT LOADING CALCULATIONS

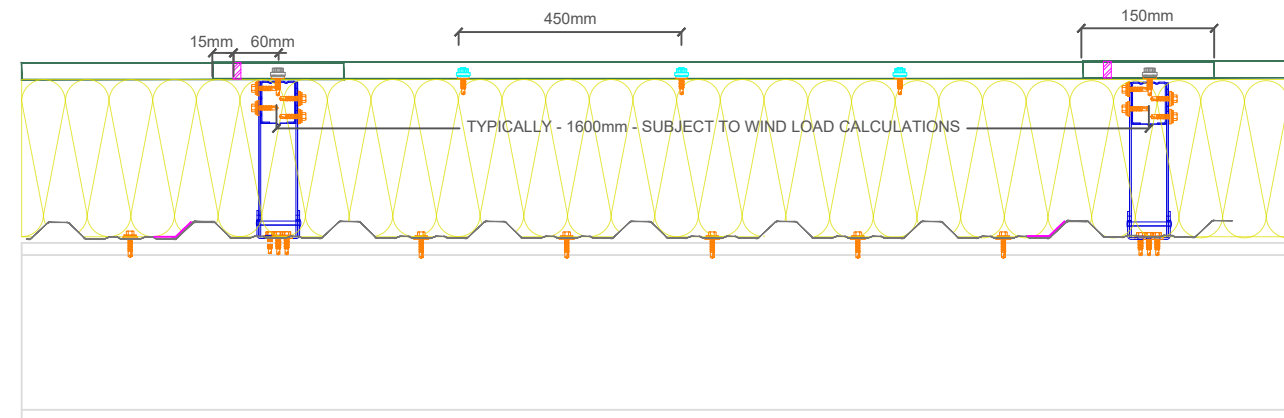
PROTEX APPROVED - GLASS FIBRE INSULATION
THICKNESS TO SUIT U-VALUE REQUIREMENT
MINIMUM THICKNESS - 120mm
FIRE CLASS A1 RATED TO EN 13501-1
MANUFACTURED IN ACCORDANCE WITH BS EN 13162
(SUGGESTED THICKNESS TO BE >10% THAN SPACER SYSTEM DEPTH.)

PROTEX APPROVED - BRACKET FIXING
STAINLESS STEEL SELF DRILLING & SELF TAPPING
16mm Ø EDPM WASHER
PATTERN
AS PER LAYOUT CALCULATION

PROTEX APPROVED - LINER MAIN FIXING
STAINLESS STEEL SELF DRILLING & SELF TAPPING
16mm Ø EDPM WASHER
PATTERN
SHEET ENDS - EVERY TROUGH - 6 NO. FIXINGS
INTERMEDIATE SUPPORTS - ALTERNATE TROUGH - 4 NO. FIXINGS

PROTEX APPROVED - LINER SIDE LAP SEALANT
50mm * 1mm BUTYL TAPE
LOCATION
1-NO. CONTINUOUS RUN. POSITIONED CENTRAL OVER JOIN

N1000L+ INTERNAL LINER PROFILE
GAUGE - 0.4mm
COATING - BRIGHT WHITE LINER



- INSTALLATION NOTES**
- FLASHING JOINTS SEALED WITH BUTYL
 - FLASHING JOINTS FIXED AT 100mm CENTRES (RIVET OR STITCH)
 - FLASHINGS FIXED AT 450mm CENTRES
 - BRACKET MUST BE POSITIONED WITHIN 100mm OF END OF BAR OR MALE END JOIN
 - NO IMPACT DRIVERS OR CLUTCHLESS DRILLS
 - NO CARBON FIXINGS

| REV | DATE | DESCRIPTION |
|-----|------|-------------|
| | | |

FirthSteels
Firth Steels Ltd, Calderbank, River Street, Brighouse, West Yorkshire HD6 1LU
Technical@firth-steels.co.uk +44 1484 405940 Firth-steels.co.uk



PROTEX



This draft drawing has been supplied by Firth Steels Ltd for guidance purposes only and is provided free of charge. It represents a suggested typical detail and should not be assumed as suitable for any specific project or application. It is essential to read this in conjunction with the Protex System specification documents to ensure completeness of information. Please note, no responsibility is assumed for errors or misinterpretations resulting from the information contained within this drawing. Details depicted are for illustration purposes only, and no liability is accepted for their use. Firth Steels reserves the right to modify details without notice. This drawing is the property of Firth Steels Ltd, any reproduction without explicit written consent is prohibited. Firth Steels is committed to ongoing improvement. The details and data shared in this document are reflective of the current state as of the issue date. It is the duty of the recipients to ensure that the information in this document is still up-to-date at the time of its use.

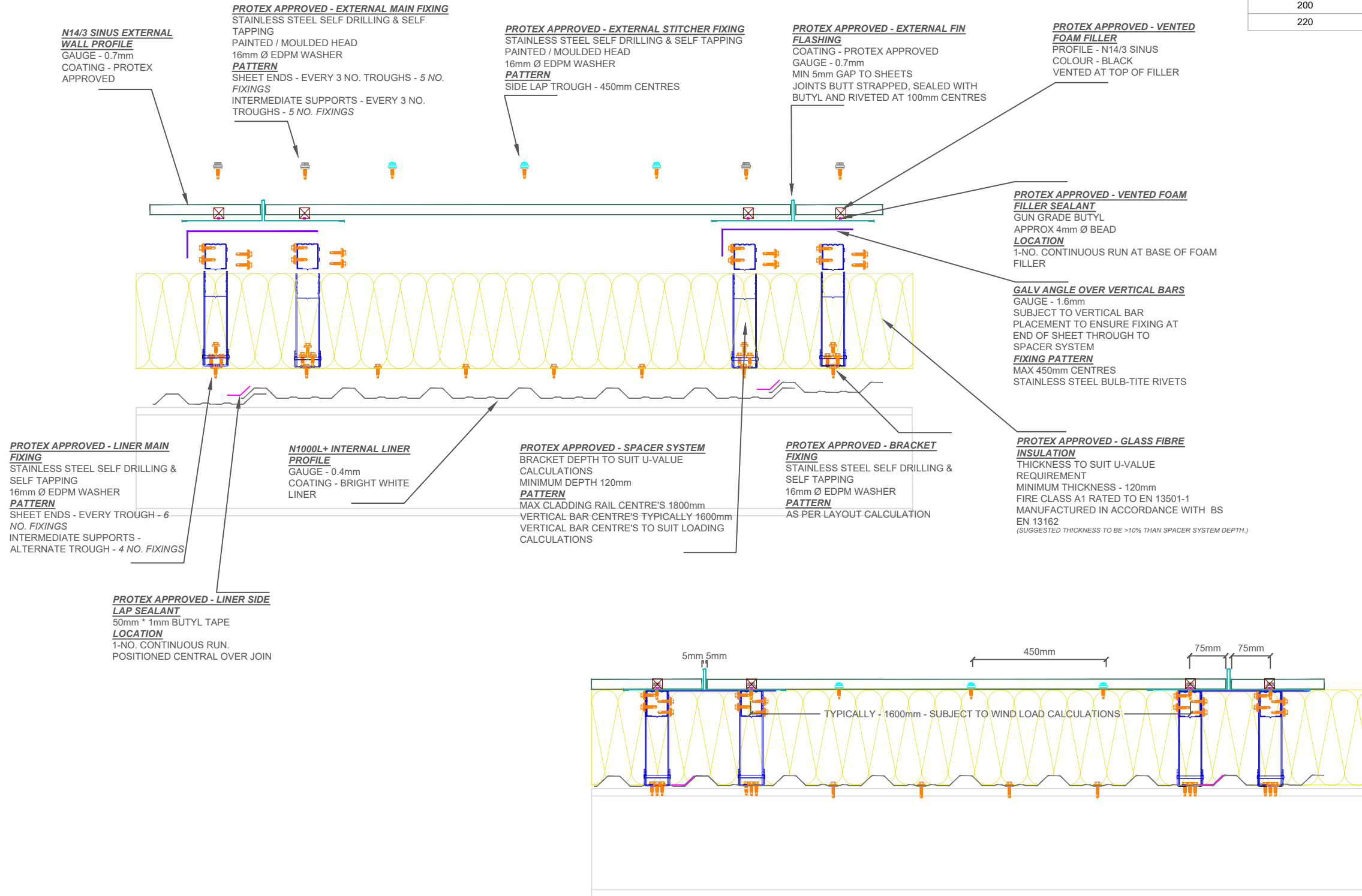
Drawing Number
Protex-WS04-1 End Lap Detail

| | | |
|----------------|------------------|--------------------|
| Drawn by KP | Checked by TO | Date 24/09/2024 |
|----------------|------------------|--------------------|

| | | |
|----------------------------|------------|---------------|
| Project Title PRX-WS-04 | Size A3 | Revision A |
|----------------------------|------------|---------------|

<<< DO NOT SCALE FROM THIS DRAWING >>>

| Total System Depth (mm) | Bracket / insulation Thickness (mm) | Thermal Performance (W/m ² K) | Acoustic Performance RW (db) | System Weight (Kg/m ²) |
|-------------------------|-------------------------------------|--|------------------------------|------------------------------------|
| 140 | 120 | 0.37 | 43 | 12.6 |
| 160 | 140 | 0.32 | 45 | 12.8 |
| 180 | 160 | 0.28 | 47 | 13.1 |
| 200 | 180 | 0.25 | 49 | 13.3 |
| 220 | 200 | 0.23 | 50 | 13.6 |



- INSTALLATION NOTES**
- FLASHING JOINTS SEALED WITH BUTYL
 - FLASHING JOINTS FIXED AT 100mm CENTRES (RIVET OR STITCH)
 - FLASHINGS FIXED AT 450mm CENTRES
 - BRACKET MUST BE POSITIONED WITHIN 100mm OF END OF BAR OR MALE END JOIN
 - NO IMPACT DRIVERS OR CLUTCHLESS DRILLS
 - NO CARBON FIXINGS

| REV | DATE | DESCRIPTION |
|-----|------|-------------|
| | | |

FirthSteels[®]
Firth Steels Ltd, Calderbank, River Street, Brighouse, West Yorkshire HD6 1LU
Technical@firth-steels.co.uk +44 1484 405940 Firth-steels.co.uk

SGS
UKAS
PlanetMark

PROTEX[®]

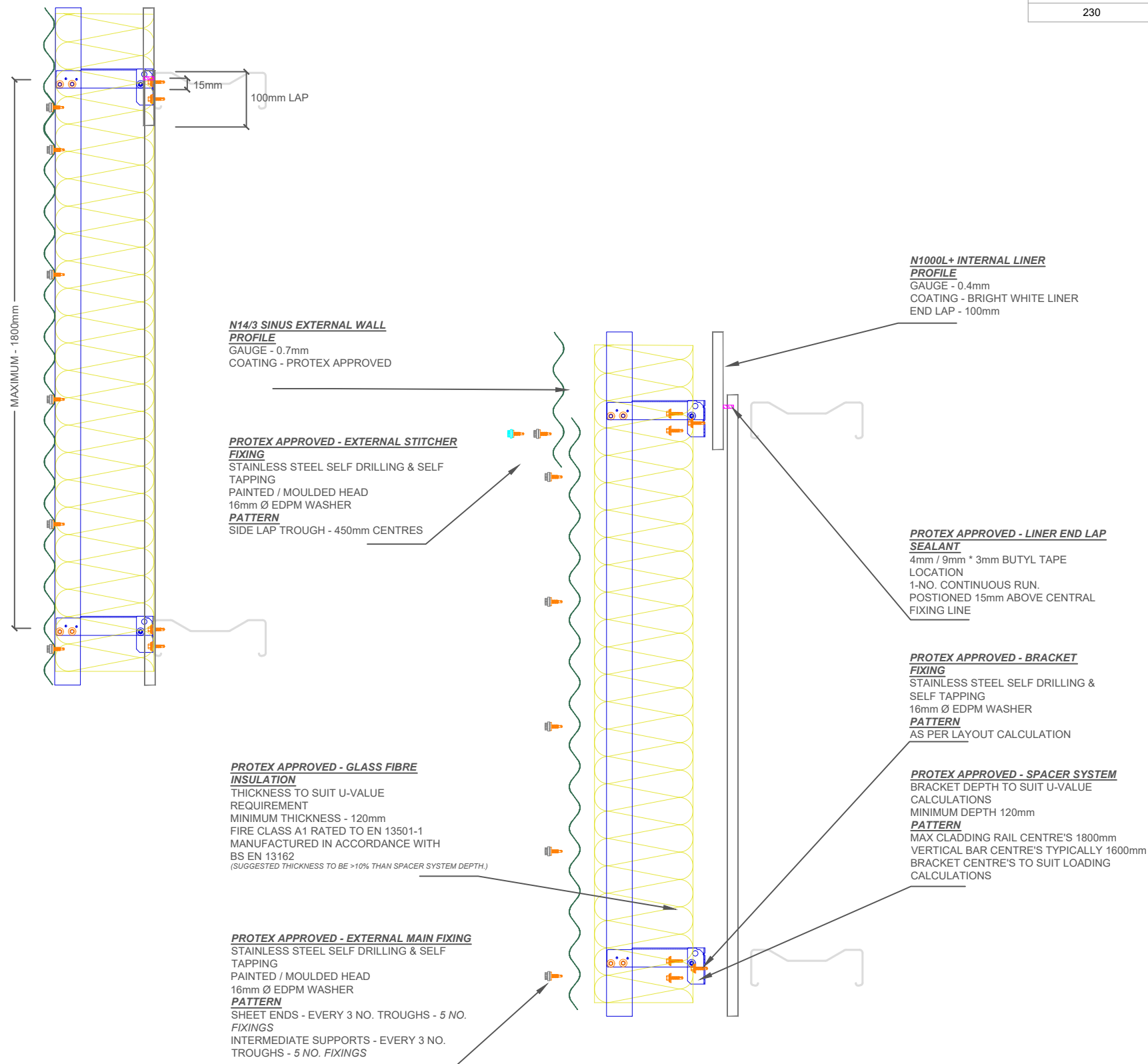
UKCA
LPCB
UKAS
LPS 1181 Curt/LPCB ref. 1611a

This draft drawing has been supplied by Firth Steels Ltd for guidance purposes only and is provided free of charge. It represents a suggested typical detail and should not be assumed as suitable for any specific project or application. It is essential to read this in conjunction with the Protex System specification documents to ensure completeness of information. Please note, no responsibility is assumed for errors or misinterpretations resulting from the information contained within this drawing. Details depicted are for illustration purposes only, and no liability is accepted for their use. Firth Steels reserves the right to modify details without notice. This drawing is the property of Firth Steels Ltd, any reproduction without explicit written consent is prohibited. Firth Steels is committed to ongoing improvement. The details and data shared in this document are reflective of the current state as of the issue date. It is the duty of the recipients to ensure that the information in this document is still up-to-date at the time of its use.

| | | | |
|----------------|------------|------------------------------------|----------|
| Drawing Number | | Protex-WS04-1.1 Fin Feature Detail | |
| Drawn by | Checked by | Date | |
| KP | TO | 24/09/2024 | |
| Project Title | | Size | Revision |
| PRX-WS-04 | | A3 | A |

<<< DO NOT SCALE FROM THIS DRAWING >>>

| Total System Depth (mm) | Bracket / insulation Thickness (mm) | Thermal Performance (W/m ² K) | Acoustic Performance RW (db) | System Weight (Kg/m ²) |
|-------------------------|-------------------------------------|--|------------------------------|------------------------------------|
| 150 | 120 | 0.37 | 41 | 12.6 |
| 170 | 140 | 0.32 | 42 | 12.8 |
| 190 | 160 | 0.28 | 44 | 13.1 |
| 210 | 180 | 0.25 | 45 | 13.3 |
| 230 | 200 | 0.22 | 47 | 13.6 |



- INSTALLATION NOTES**
- FLASHING JOINTS SEALED WITH BUTYL
 - FLASHING JOINTS FIXED AT 100mm CENTRES (RIVET OR STITCH)
 - FLASHINGS FIXED AT 450mm CENTRES
 - BRACKET MUST BE POSITIONED WITHIN 100mm OF END OF BAR OR MALE END JOIN
 - NO IMPACT DRIVERS OR CLUTCHLESS DRILLS
 - NO CARBON FIXINGS

| REV | DATE | DESCRIPTION |
|-----|------|-------------|
| | | |



This draft drawing has been supplied by Firth Steels Ltd for guidance purposes only and is provided free of charge. It represents a suggested typical detail and should not be assumed as suitable for any specific project or application. It is essential to read this in conjunction with the Protex System specification documents to ensure completeness of information. Please note, no responsibility is assumed for errors or misinterpretations resulting from the information contained within this drawing. Details depicted are for illustration purposes only, and no liability is accepted for their use. Firth Steels reserves the right to modify details without notice. This drawing is the property of Firth Steels Ltd, any reproduction without explicit written consent is prohibited. Firth Steels is committed to ongoing improvement. The details and data shared in this document are reflective of the current state as of the issue date. It is the duty of the recipients to ensure that the information in this document is still up-to-date at the time of its use.

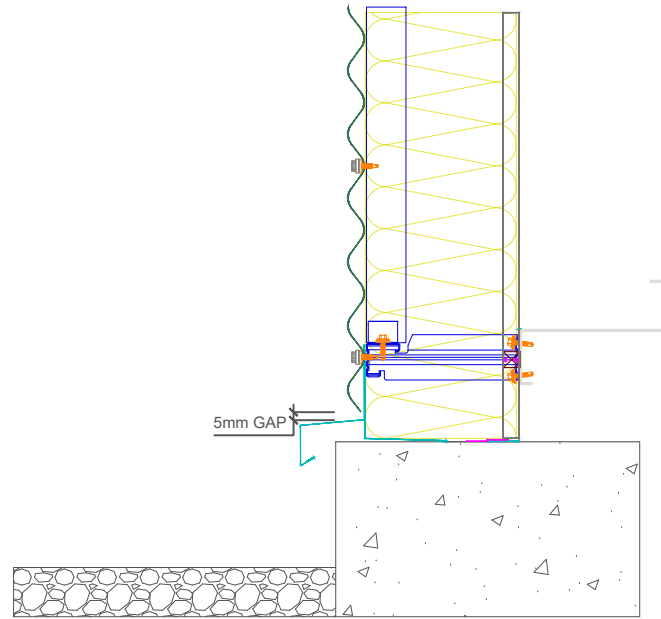
Drawing Number
Protex-WS04-2 Side Lap Detail

| | | |
|----------------|------------------|--------------------|
| Drawn by KP | Checked by TO | Date 24/09/2024 |
|----------------|------------------|--------------------|

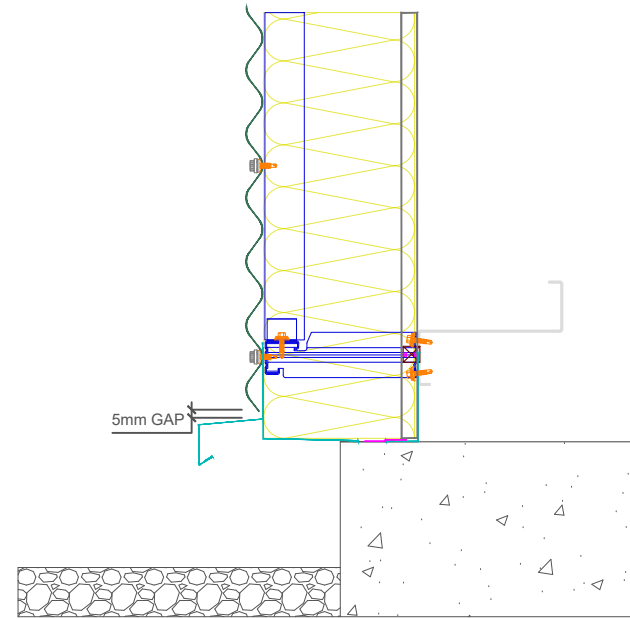
| | | |
|----------------------------|------------|---------------|
| Project Title PRX-WS-04 | Size A3 | Revision A |
|----------------------------|------------|---------------|

<<< DO NOT SCALE FROM THIS DRAWING >>>

INLINE BASE DETAIL



OVERHANGING BASE DETAIL



PROTEX APPROVED - SPACER SYSTEM
BRACKET DEPTH TO SUIT U-VALUE CALCULATIONS
MINIMUM DEPTH 120mm
PATTERN
MAX CLADDING RAIL CENTRE'S 1800mm
VERTICAL BAR CENTRE'S TYPICALLY 1600mm
BRACKET CENTRE'S TO SUIT LOADING CALCULATIONS

N14/3 SINUS EXTERNAL WALL PROFILE
GAUGE - 0.7mm
COATING - PROTEX APPROVED

N1000L+ INTERNAL LINER PROFILE
GAUGE - 0.4mm
COATING - BRIGHT WHITE LINER

PROTEX APPROVED - SPACER SYSTEM (HORIZONTAL BASE BAR)
BRACKET DEPTH TO SUIT U-VALUE CALCULATIONS
MINIMUM DEPTH 120mm
PATTERN
MAX CLADDING RAIL CENTRE'S 1800mm
MAX BRACKET CENTRE'S 1000mm
BRACKET CENTRE'S TO SUIT LOADING CALCULATIONS
HORIZONTAL BAR AT THE BASE DETAIL WITH AFT CONNECTIONS TO CONNECT TO THE VERTICAL BARS
BRACKET MUST BE PLACED WITHIN 100mm OF MALE END OF SPACER SYSTEM JOINT

PROTEX APPROVED - BRACKET FIXING
STAINLESS STEEL SELF DRILLING & SELF TAPPING
16mm Ø EDPM WASHER
PATTERN
AS PER LAYOUT CALCULATION

PROTEX APPROVED - INTERNAL CLOSURE FLASHING
COATING - BRIGHT WHITE LINER
GAUGE - 0.7mm

PROTEX APPROVED - EXTERNAL DRIP FLASHING
COATING - PROTEX APPROVED
GAUGE - 0.7mm
JOINTS BUTT STRAPPED AND FULLY SEALED WITH BUTYL TAPE AND FRONT FACE RIVETED AT 100mm CENTRES

PROTEX APPROVED - FLASHING SEALANT
50mm * 1mm BUTYL TAPE
LOCATION
1-NO. CONTINUOUS RUN.

PROTEX APPROVED - GLASS FIBRE INSULATION
THICKNESS TO SUIT U-VALUE REQUIREMENT
MINIMUM THICKNESS - 120mm
FIRE CLASS A1 RATED TO EN 13501-1
MANUFACTURED IN ACCORDANCE WITH BS EN 13162
(SUGGESTED THICKNESS TO BE >10% THAN SPACER SYSTEM DEPTH.)

AFT CONNECTORS
USED TO SECURE VERTICAL BARS TO HORIZONTAL SPACER SYSTEM

PROTEX APPROVED - EXTERNAL DRIP FLASHING STITCHER FIXINGS
STAINLESS STEEL SELF DRILLING & SELF TAPPING
PAINTED / MOULDED HEAD
16mm Ø EDPM WASHER
PATTERN
450mm CENTRES

PROTEX APPROVED - FOAM FILLER SEALANT
GUN GRADE BUTYL
APPROX 4mm Ø BEAD
LOCATION
CONTINUOUS RUNS TOP & BOTTOM OF FOAM FILLER

PROTEX APPROVED - FOAM FILLER
PROFILE - N1000L+
COLOUR - WHITE

| REV | DATE | DESCRIPTION |
|-----|------|-------------|
| | | |

FirthSteels
Firth Steels Ltd, Calderbank, River Street, Brighouse, West Yorkshire HD6 1LU
Technical@firth-steels.co.uk +44 1484 405940 Firth-steels.co.uk



PROTEX

UK CA



This draft drawing has been supplied by Firth Steels Ltd for guidance purposes only and is provided free of charge. It represents a suggested typical detail and should not be assumed as suitable for any specific project or application. It is essential to read this in conjunction with the Protex System specification documents to ensure completeness of information. Please note, no responsibility is assumed for errors or misinterpretations resulting from the information contained within this drawing. Details depicted are for illustration purposes only, and no liability is accepted for their use. Firth Steels reserves the right to modify details without notice. This drawing is the property of Firth Steels Ltd, any reproduction without explicit written consent is prohibited. Firth Steels is committed to ongoing improvement. The details and data shared in this document are reflective of the current state as of the issue date. It is the duty of the recipients to ensure that the information in this document is still up-to-date at the time of its use.

Drawing Number
Protex-WS04-3 Drip Detail

Drawn by
KP

Checked by
TO

Date
24/09/2024

Project Title
PRX-WS-04

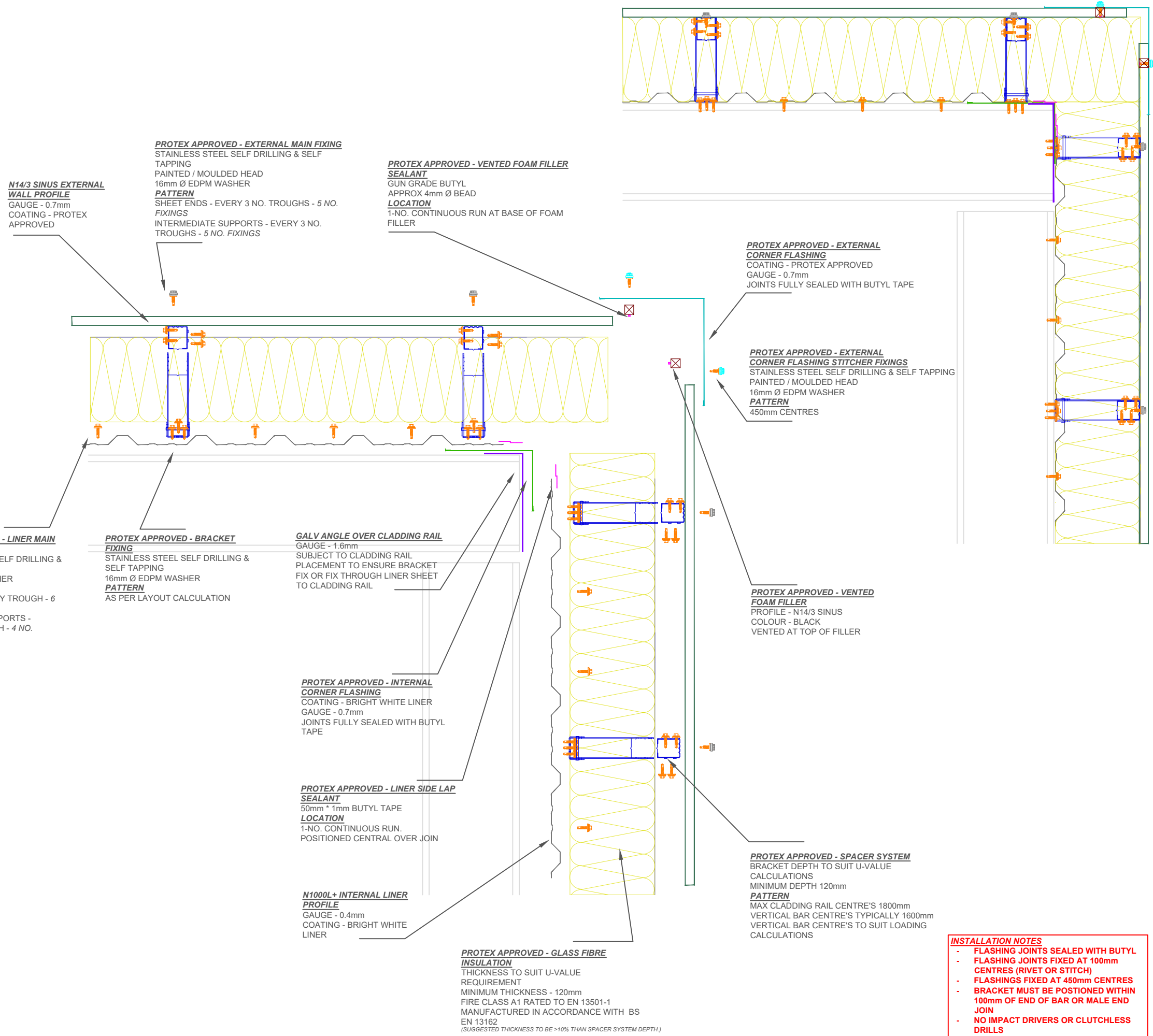
Size
A3

Revision
A

INSTALLATION NOTES

- FLASHING JOINTS SEALED WITH BUTYL
- FLASHING JOINTS FIXED AT 100mm CENTRES (RIVET OR STITCH)
- FLASHINGS FIXED AT 450mm CENTRES
- BRACKET MUST BE POSITIONED WITHIN 100mm OF END OF BAR OR MALE END JOIN
- NO IMPACT DRIVERS OR CLUTCHLESS DRILLS
- NO CARBON FIXINGS

<<< DO NOT SCALE FROM THIS DRAWING >>>



N14/3 SINUS EXTERNAL WALL PROFILE
 GAUGE - 0.7mm
 COATING - PROTEX APPROVED

PROTEX APPROVED - EXTERNAL MAIN FIXING
 STAINLESS STEEL SELF DRILLING & SELF TAPPING
 PAINTED / MOULDED HEAD
 16mm Ø EDPM WASHER
PATTERN
 SHEET ENDS - EVERY 3 NO. TROUGHS - 5 NO. FIXINGS
 INTERMEDIATE SUPPORTS - EVERY 3 NO. TROUGHS - 5 NO. FIXINGS

PROTEX APPROVED - VENTED FOAM FILLER SEALANT
 GUN GRADE BUTYL
 APPROX 4mm Ø BEAD
LOCATION
 1-NO. CONTINUOUS RUN AT BASE OF FOAM FILLER

PROTEX APPROVED - EXTERNAL CORNER FLASHING
 COATING - PROTEX APPROVED
 GAUGE - 0.7mm
 JOINTS FULLY SEALED WITH BUTYL TAPE

PROTEX APPROVED - EXTERNAL CORNER FLASHING STITCHER FIXINGS
 STAINLESS STEEL SELF DRILLING & SELF TAPPING
 PAINTED / MOULDED HEAD
 16mm Ø EDPM WASHER
PATTERN
 450mm CENTRES

MAX 300mm

PROTEX APPROVED - LINER MAIN FIXING
 STAINLESS STEEL SELF DRILLING & SELF TAPPING
 16mm Ø EDPM WASHER
PATTERN
 SHEET ENDS - EVERY TROUGH - 6 NO. FIXINGS
 INTERMEDIATE SUPPORTS - ALTERNATE TROUGH - 4 NO. FIXINGS

PROTEX APPROVED - BRACKET FIXING
 STAINLESS STEEL SELF DRILLING & SELF TAPPING
 16mm Ø EDPM WASHER
PATTERN
 AS PER LAYOUT CALCULATION

GALV ANGLE OVER CLADDING RAIL
 GAUGE - 1.6mm
 SUBJECT TO CLADDING RAIL PLACEMENT TO ENSURE BRACKET FIX OR FIX THROUGH LINER SHEET TO CLADDING RAIL

PROTEX APPROVED - INTERNAL CORNER FLASHING
 COATING - BRIGHT WHITE LINER
 GAUGE - 0.7mm
 JOINTS FULLY SEALED WITH BUTYL TAPE

PROTEX APPROVED - LINER SIDE LAP SEALANT
 50mm * 1mm BUTYL TAPE
LOCATION
 1-NO. CONTINUOUS RUN. POSITIONED CENTRAL OVER JOIN

N1000L+ INTERNAL LINER PROFILE
 GAUGE - 0.4mm
 COATING - BRIGHT WHITE LINER

PROTEX APPROVED - GLASS FIBRE INSULATION
 THICKNESS TO SUIT U-VALUE REQUIREMENT
 MINIMUM THICKNESS - 120mm
 FIRE CLASS A1 RATED TO EN 13501-1
 MANUFACTURED IN ACCORDANCE WITH BS EN 13162
 (SUGGESTED THICKNESS TO BE >10% THAN SPACER SYSTEM DEPTH.)

PROTEX APPROVED - VENTED FOAM FILLER
 PROFILE - N14/3 SINUS
 COLOUR - BLACK
 VENTED AT TOP OF FILLER

PROTEX APPROVED - SPACER SYSTEM
 BRACKET DEPTH TO SUIT U-VALUE CALCULATIONS
 MINIMUM DEPTH 120mm
PATTERN
 MAX CLADDING RAIL CENTRE'S 1800mm
 VERTICAL BAR CENTRE'S TYPICALLY 1600mm
 VERTICAL BAR CENTRE'S TO SUIT LOADING CALCULATIONS

- INSTALLATION NOTES**
- FLASHING JOINTS SEALED WITH BUTYL
 - FLASHING JOINTS FIXED AT 100mm CENTRES (RIVET OR STITCH)
 - FLASHINGS FIXED AT 450mm CENTRES
 - BRACKET MUST BE POSITIONED WITHIN 100mm OF END OF BAR OR MALE END JOIN
 - NO IMPACT DRIVERS OR CLUTCHLESS DRILLS
 - NO CARBON FIXINGS

| REV | DATE | DESCRIPTION |
|-----|------|-------------|
| | | |

FirthSteels[®]
 Firth Steels Ltd, Calderbank, River Street, Brighouse, West Yorkshire HD6 1LU
 Technical@firth-steels.co.uk +44 1484 405940 Firth-steels.co.uk

SGS SGS SGS UKAS
 PlanetMark

PROTEX[®]

UK CA

LPCB
 UKAS
 LPS 1181 Cert/LPCB ref. 1611a

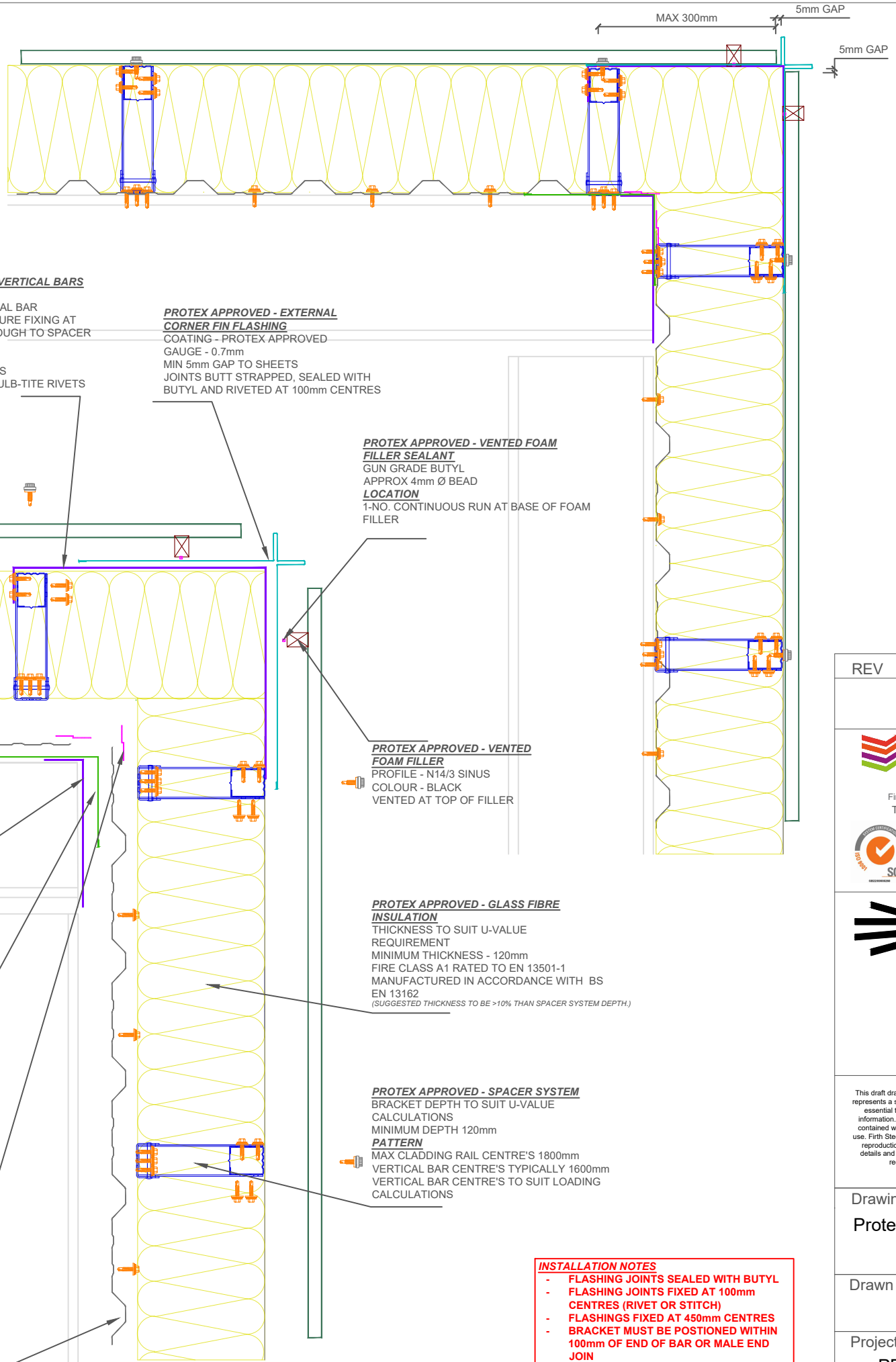
This draft drawing has been supplied by Firth Steels Ltd for guidance purposes only and is provided free of charge. It represents a suggested typical detail and should not be assumed as suitable for any specific project or application. It is essential to read this in conjunction with the Protex System specification documents to ensure completeness of information. Please note, no responsibility is assumed for errors or misinterpretations resulting from the information contained within this drawing. Details depicted are for illustration purposes only, and no liability is accepted for their use. Firth Steels reserves the right to modify details without notice. This drawing is the property of Firth Steels Ltd, any reproduction without explicit written consent is prohibited. Firth Steels is committed to ongoing improvement. The details and data shared in this document are reflective of the current state as of the issue date. It is the duty of the recipients to ensure that the information in this document is still up-to-date at the time of its use.

Drawing Number
Protex-WS04-4 Standard External Corner

| | | |
|----------------|------------------|--------------------|
| Drawn by KP | Checked by TO | Date 24/09/2024 |
|----------------|------------------|--------------------|

| | | |
|----------------------------|------------|---------------|
| Project Title PRX-WS-04 | Size A3 | Revision A |
|----------------------------|------------|---------------|

<<< DO NOT SCALE FROM THIS DRAWING >>>



N14/3 SINUS EXTERNAL WALL PROFILE
GAUGE - 0.7mm
COATING - PROTEX APPROVED

PROTEX APPROVED - EXTERNAL MAIN FIXING
STAINLESS STEEL SELF DRILLING & SELF TAPPING
16mm Ø EDPM WASHER
PATTERN
SHEET ENDS - EVERY 3 NO. TROUGHS - 5 NO. FIXINGS
INTERMEDIATE SUPPORTS - EVERY 3 NO. TROUGHS - 5 NO. FIXINGS

GALV ANGLE OVER VERTICAL BARS
GAUGE - 1.6mm
SUBJECT TO VERTICAL BAR PLACEMENT TO ENSURE FIXING AT END OF SHEET THROUGH TO SPACER SYSTEM
FIXING PATTERN
MAX 450mm CENTRES
STAINLESS STEEL BULB-TITE RIVETS

PROTEX APPROVED - EXTERNAL CORNER FIN FLASHING
COATING - PROTEX APPROVED
GAUGE - 0.7mm
MIN 5mm GAP TO SHEETS
JOINTS BUTT STRAPPED, SEALED WITH BUTYL AND RIVETED AT 100mm CENTRES

PROTEX APPROVED - VENTED FOAM FILLER SEALANT
GUN GRADE BUTYL
APPROX 4mm Ø BEAD
LOCATION
1-NO. CONTINUOUS RUN AT BASE OF FOAM FILLER

PROTEX APPROVED - VENTED FOAM FILLER
PROFILE - N14/3 SINUS
COLOUR - BLACK
VENTED AT TOP OF FILLER

PROTEX APPROVED - GLASS FIBRE INSULATION
THICKNESS TO SUIT U-VALUE REQUIREMENT
MINIMUM THICKNESS - 120mm
FIRE CLASS A1 RATED TO EN 13501-1
MANUFACTURED IN ACCORDANCE WITH BS EN 13162
(SUGGESTED THICKNESS TO BE >10% THAN SPACER SYSTEM DEPTH.)

PROTEX APPROVED - SPACER SYSTEM
BRACKET DEPTH TO SUIT U-VALUE CALCULATIONS
MINIMUM DEPTH 120mm
PATTERN
MAX CLADDING RAIL CENTRE'S 1800mm
VERTICAL BAR CENTRE'S TYPICALLY 1600mm
VERTICAL BAR CENTRE'S TO SUIT LOADING CALCULATIONS

PROTEX APPROVED - LINER MAIN FIXING
STAINLESS STEEL SELF DRILLING & SELF TAPPING
16mm Ø EDPM WASHER
PATTERN
SHEET ENDS - EVERY TROUGH - 6 NO. FIXINGS
INTERMEDIATE SUPPORTS - ALTERNATE TROUGH - 4 NO. FIXINGS

PROTEX APPROVED - BRACKET FIXING
STAINLESS STEEL SELF DRILLING & SELF TAPPING
16mm Ø EDPM WASHER
PATTERN
AS PER LAYOUT CALCULATION

GALV ANGLE OVER CLADDING RAIL
GAUGE - 1.6mm
SUBJECT TO CLADDING RAIL PLACEMENT TO ENSURE BRACKET FIX OR FIX THROUGH LINER SHEET TO CLADDING RAIL

PROTEX APPROVED - INTERNAL CORNER FLASHING
COATING - BRIGHT WHITE LINER
GAUGE - 0.7mm
JOINTS FULLY SEALED WITH BUTYL TAPE

PROTEX APPROVED - LINER SIDE LAP SEALANT
50mm * 1mm BUTYL TAPE
LOCATION
1-NO. CONTINUOUS RUN. POSITIONED CENTRAL OVER JOIN

N1000L+ INTERNAL LINER PROFILE
GAUGE - 0.4mm
COATING - BRIGHT WHITE LINER

- INSTALLATION NOTES**
- FLASHING JOINTS SEALED WITH BUTYL
 - FLASHING JOINTS FIXED AT 100mm CENTRES (RIVET OR STITCH)
 - FLASHINGS FIXED AT 450mm CENTRES
 - BRACKET MUST BE POSITIONED WITHIN 100mm OF END OF BAR OR MALE END JOIN
 - NO IMPACT DRIVERS OR CLUTCHLESS DRILLS
 - NO CARBON FIXINGS

| REV | DATE | DESCRIPTION |
|-----|------|-------------|
|-----|------|-------------|

FirthSteels[®]

Firth Steels Ltd, Calderbank, River Street, Brighouse, West Yorkshire HD6 1LU
Technical@firth-steels.co.uk +44 1484 405940 Firth-steels.co.uk



PROTEX[®]

UK CA



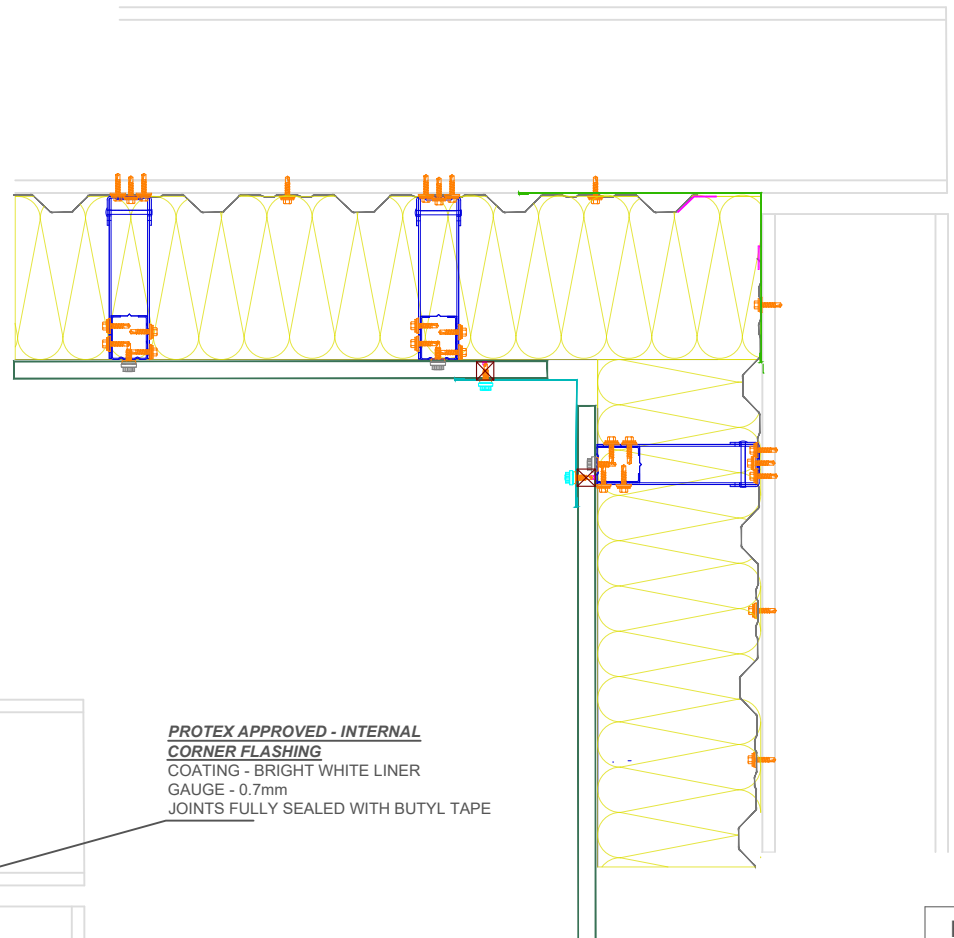
This draft drawing has been supplied by Firth Steels Ltd for guidance purposes only and is provided free of charge. It represents a suggested typical detail and should not be assumed as suitable for any specific project or application. It is essential to read this in conjunction with the Protex System specification documents to ensure completeness of information. Please note, no responsibility is assumed for errors or misinterpretations resulting from the information contained within this drawing. Details depicted are for illustration purposes only, and no liability is accepted for their use. Firth Steels reserves the right to modify details without notice. This drawing is the property of Firth Steels Ltd, any reproduction without explicit written consent is prohibited. Firth Steels is committed to ongoing improvement. The details and data shared in this document are reflective of the current state as of the issue date. It is the duty of the recipients to ensure that the information in this document is still up-to-date at the time of its use.

Drawing Number
Protex-WS04-4.1 External Corner Fin Flashing

| | | |
|----------------|------------------|--------------------|
| Drawn by KP | Checked by TO | Date 24/09/2024 |
|----------------|------------------|--------------------|

| | | |
|----------------------------|------------|---------------|
| Project Title PRX-WS-04 | Size A3 | Revision A |
|----------------------------|------------|---------------|

<<< DO NOT SCALE FROM THIS DRAWING >>>



PROTEX APPROVED - BRACKET FIXING
 STAINLESS STEEL SELF DRILLING & SELF TAPPING
 16mm Ø EDPM WASHER
PATTERN
 AS PER LAYOUT CALCULATION

PROTEX APPROVED - LINER MAIN FIXING
 STAINLESS STEEL SELF DRILLING & SELF TAPPING
 16mm Ø EDPM WASHER
PATTERN
 SHEET ENDS - EVERY TROUGH - 6 NO. FIXINGS
 INTERMEDIATE SUPPORTS - ALTERNATE TROUGH - 4 NO. FIXINGS

PROTEX APPROVED - INTERNAL CORNER FLASHING
 COATING - BRIGHT WHITE LINER
 GAUGE - 0.7mm
 JOINTS FULLY SEALED WITH BUTYL TAPE

N1000L+ INTERNAL LINER PROFILE
 GAUGE - 0.4mm
 COATING - BRIGHT WHITE LINER

N14/3 SINUS EXTERNAL WALL PROFILE
 GAUGE - 0.7mm
 COATING - PROTEX APPROVED

PROTEX APPROVED - LINER SIDE LAP SEALANT
 50mm * 1mm BUTYL TAPE
LOCATION
 1-NO. CONTINUOUS RUN. POSITIONED CENTRAL OVER JOIN

PROTEX APPROVED - EXTERNAL MAIN FIXING
 STAINLESS STEEL SELF DRILLING & SELF TAPPING
 PAINTED / MOULDED HEAD
 16mm Ø EDPM WASHER
PATTERN
 SHEET ENDS - EVERY 3 NO. TROUGHS - 5 NO. FIXINGS
 INTERMEDIATE SUPPORTS - EVERY 3 NO. TROUGHS - 5 NO. FIXINGS

PROTEX APPROVED - EXTERNAL CORNER FLASHING
 COATING - PROTEX APPROVED
 GAUGE - 0.7mm
 JOINTS FULLY SEALED WITH BUTYL TAPE

PROTEX APPROVED - SPACER SYSTEM
 BRACKET DEPTH TO SUIT U-VALUE CALCULATIONS
 MINIMUM DEPTH 120mm
PATTERN
 MAX CLADDING RAIL CENTRE'S 1800mm
 VERTICAL BAR CENTRE'S TYPICALLY 1600mm
 VERTICAL BAR CENTRE'S TO SUIT LOADING CALCULATIONS

PROTEX APPROVED - EXTERNAL CORNER FLASHING STITCHER FIXINGS
 STAINLESS STEEL SELF DRILLING & SELF TAPPING
 PAINTED / MOULDED HEAD
 16mm Ø EDPM WASHER
PATTERN
 450mm CENTRES

PROTEX APPROVED - VENTED FOAM FILLER SEALANT
 GUN GRADE BUTYL
 APPROX 4mm Ø BEAD
LOCATION
 1-NO. CONTINUOUS RUN AT BASE OF FOAM FILLER

PROTEX APPROVED - VENTED FOAM FILLER
 PROFILE - N14/3 SINUS
 COLOUR - BLACK
 VENTED AT TOP OF FILLER

PROTEX APPROVED - GLASS FIBRE INSULATION
 THICKNESS TO SUIT U-VALUE REQUIREMENT
 MINIMUM THICKNESS - 120mm
 FIRE CLASS A1 RATED TO EN 13501-1
 MANUFACTURED IN ACCORDANCE WITH BS EN 13162
 (SUGGESTED THICKNESS TO BE >10% THAN SPACER SYSTEM DEPTH.)

- INSTALLATION NOTES**
- FLASHING JOINTS SEALED WITH BUTYL
 - FLASHING JOINTS FIXED AT 100mm CENTRES (RIVET OR STITCH)
 - FLASHINGS FIXED AT 450mm CENTRES
 - BRACKET MUST BE POSITIONED WITHIN 100mm OF END OF BAR OR MALE END JOIN
 - NO IMPACT DRIVERS OR CLUTCHLESS DRILLS
 - NO CARBON FIXINGS

| REV | DATE | DESCRIPTION |
|-----|------|-------------|
| | | |

Firth Steels
 Firth Steels Ltd, Calderbank, River Street, Brighouse, West Yorkshire HD6 1LU
 Technical@firth-steels.co.uk +44 1484 405940 Firth-steels.co.uk

SGS SGS SGS UKAS PLANETMARK

PROTEX

UK CA LPCB UKAS

LPS 1181 CertLPCB ref. 1611a

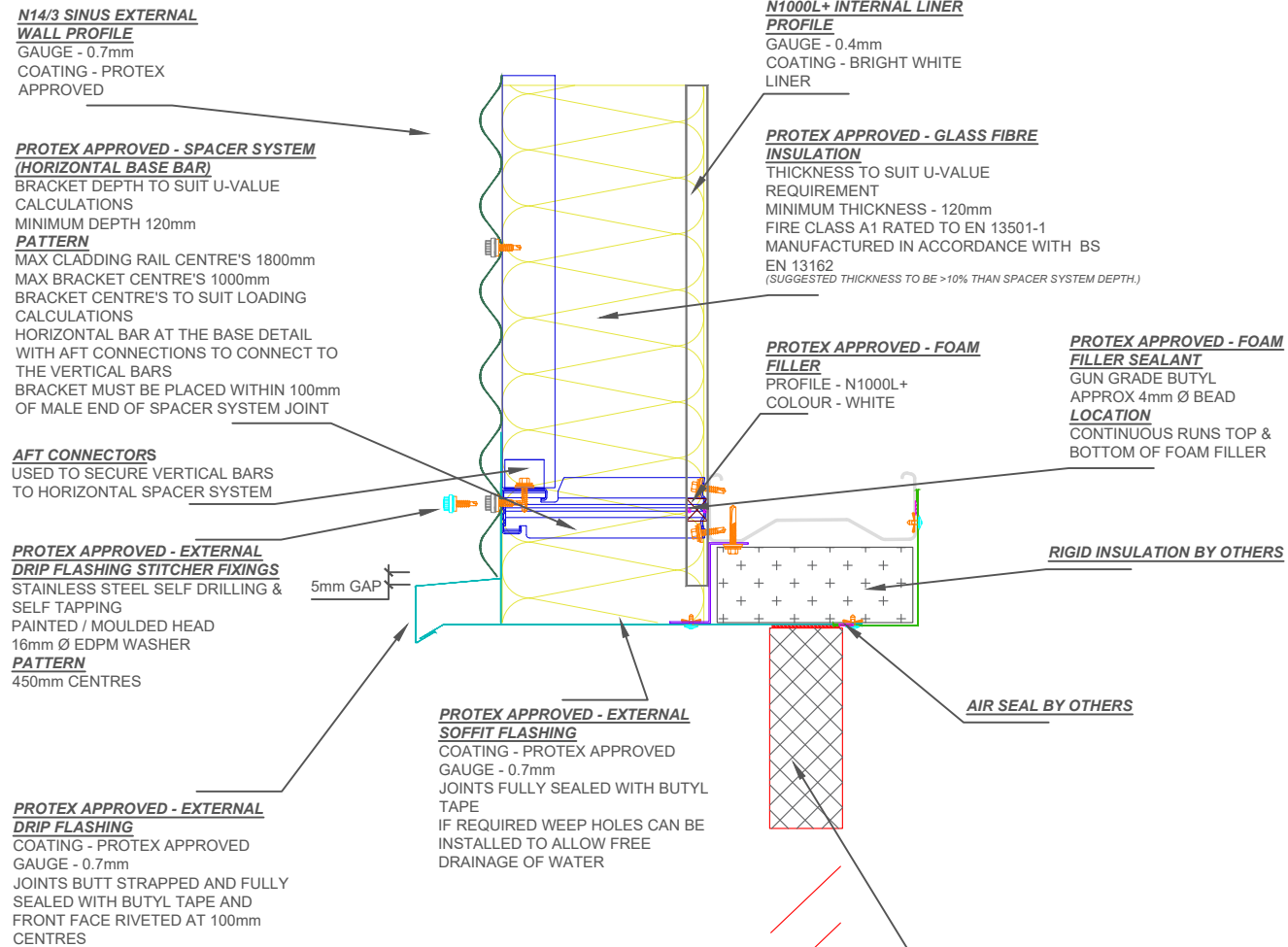
This draft drawing has been supplied by Firth Steels Ltd for guidance purposes only and is provided free of charge. It represents a suggested typical detail and should not be assumed as suitable for any specific project or application. It is essential to read this in conjunction with the Protex System specification documents to ensure completeness of information. Please note, no responsibility is assumed for errors or misinterpretations resulting from the information contained within this drawing. Details depicted are for illustration purposes only, and no liability is accepted for their use. Firth Steels reserves the right to modify details without notice. This drawing is the property of Firth Steels Ltd, any reproduction without explicit written consent is prohibited. Firth Steels is committed to ongoing improvement. The details and data shared in this document are reflective of the current state as of the issue date. It is the duty of the recipients to ensure that the information in this document is still up-to-date at the time of its use.

Drawing Number
Protex-WS04-5 Internal Corner

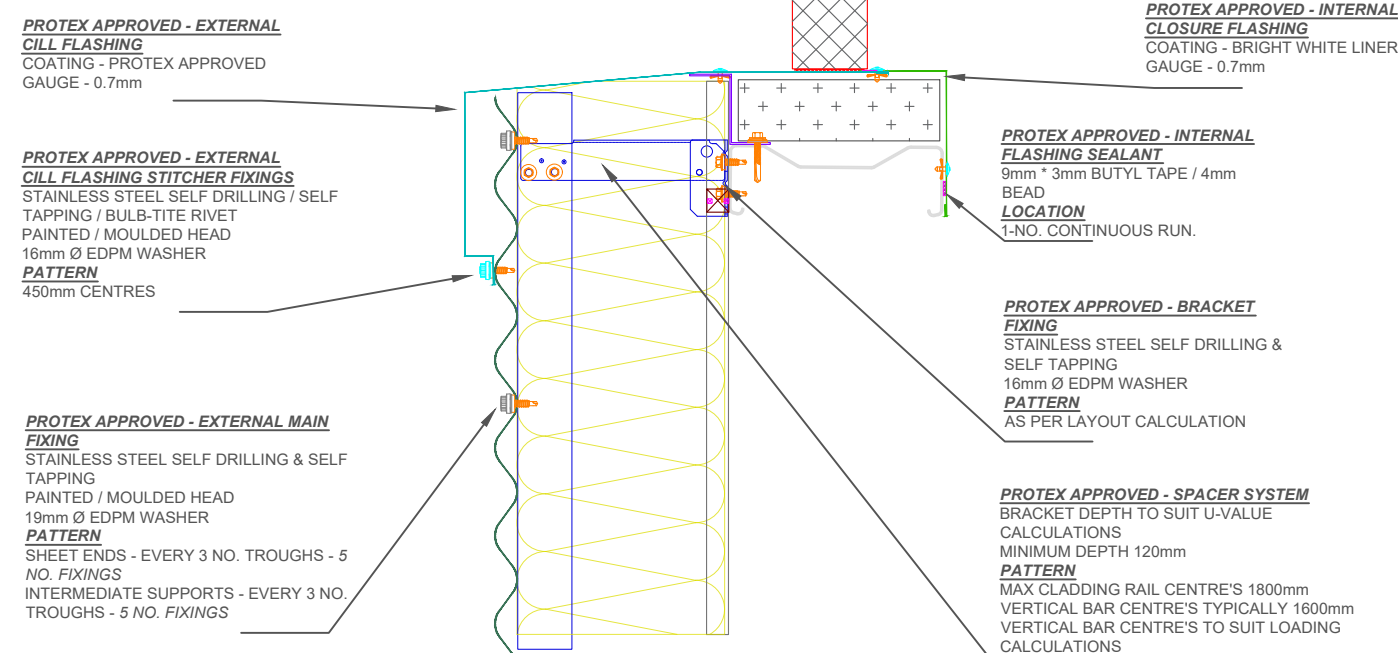
| | | |
|----------------------------|------------------|--------------------|
| Drawn by KP | Checked by TO | Date 24/09/2024 |
| Project Title PRX-WS-04 | | Size A3 |
| | | Revision A |

<<< DO NOT SCALE FROM THIS DRAWING >>>

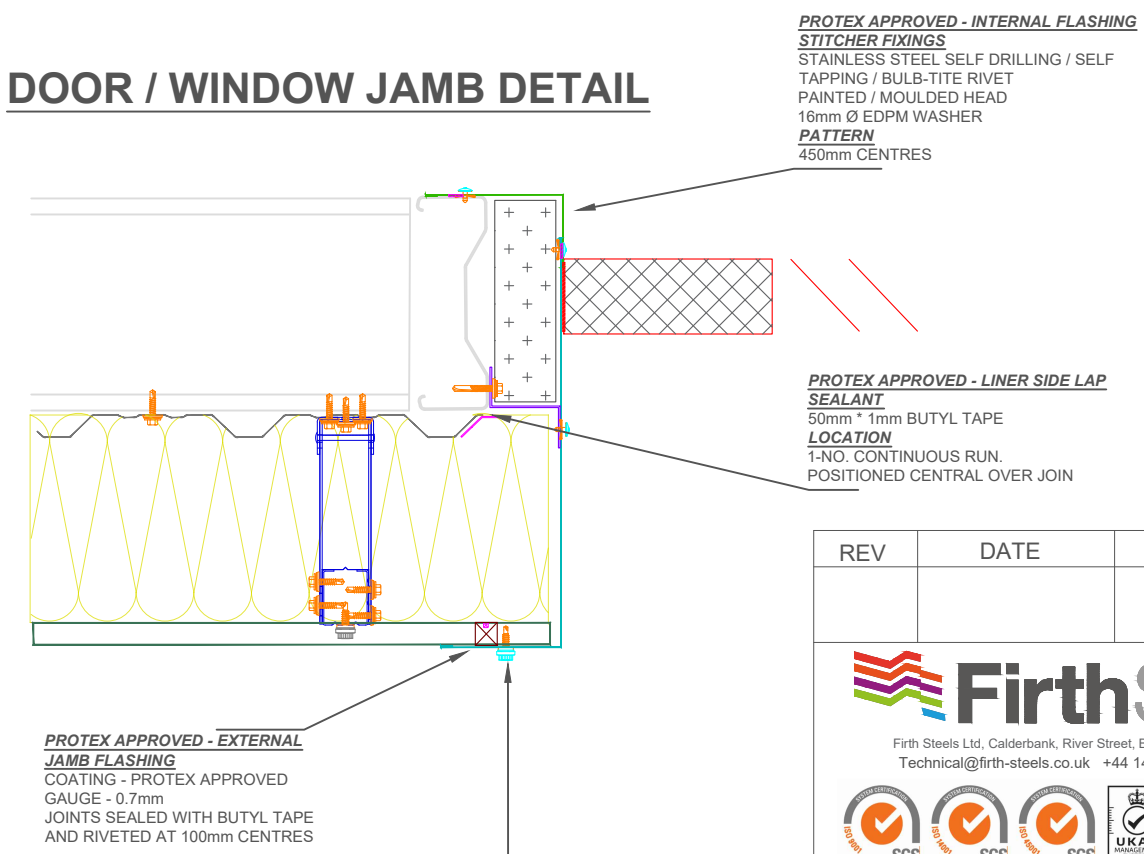
DOOR / WINDOW HEADER DETAIL



WINDOW CILL DETAIL



DOOR / WINDOW JAMB DETAIL



INSTALLATION NOTES

- FLASHING JOINTS SEALED WITH BUTYL
- FLASHING JOINTS FIXED AT 100mm CENTRES (RIVET OR STITCH)
- FLASHINGS FIXED AT 450mm CENTRES
- BRACKET MUST BE POSITIONED WITHIN 100mm OF END OF BAR OR MALE END JOIN
- NO IMPACT DRIVERS OR CLUTCHLESS DRILLS
- NO CARBON FIXINGS

| REV | DATE | DESCRIPTION |
|-----|------|-------------|
| | | |

FirthSteels
Firth Steels Ltd, Calderbank, River Street, Brighouse, West Yorkshire HD6 1LU
Technical@firth-steels.co.uk +44 1484 405940 Firth-steels.co.uk

SGS
UKAS
PlanetMark

PROTEX

UK CA
LPCB
UKAS
LPS 1181 Curt/LPCB ref. 1611a

This draft drawing has been supplied by Firth Steels Ltd for guidance purposes only and is provided free of charge. It represents a suggested typical detail and should not be assumed as suitable for any specific project or application. It is essential to read this in conjunction with the Protex System specification documents to ensure completeness of information. Please note, no responsibility is assumed for errors or misinterpretations resulting from the information contained within this drawing. Details depicted are for illustration purposes only, and no liability is accepted for their use. Firth Steels reserves the right to modify details without notice. This drawing is the property of Firth Steels Ltd, any reproduction without explicit written consent is prohibited. Firth Steels is committed to ongoing improvement. The details and data shared in this document are reflective of the current state as of the issue date. It is the duty of the recipients to ensure that the information in this document is still up-to-date at the time of its use.

Drawing Number
Protex-WS04-6 Window / Personnel Door

| | | |
|----------------------------|------------------|--------------------|
| Drawn by KP | Checked by TO | Date 24/09/2024 |
| Project Title PRX-WS-04 | Size A3 | Revision A |

<<< DO NOT SCALE FROM THIS DRAWING >>>

SHUTTER DOOR HEADER DETAIL

PROTEX APPROVED - SPACER SYSTEM (HORIZONTAL BASE BAR)

BRACKET DEPTH TO SUIT U-VALUE CALCULATIONS
 MINIMUM DEPTH 120mm
PATTERN
 MAX CLADDING RAIL CENTRE'S 1800mm
 MAX BRACKET CENTRE'S 1000mm
 BRACKET CENTRE'S TO SUIT LOADING CALCULATIONS
 HORIZONTAL BAR AT THE BASE DETAIL WITH AFT CONNECTIONS TO CONNECT TO THE VERTICAL BARS
 BRACKET MUST BE PLACED WITHIN 100mm OF MALE END OF SPACER SYSTEM JOINT

AFT CONNECTORS
 USED TO SECURE VERTICAL BARS TO HORIZONTAL SPACER SYSTEM

PROTEX APPROVED - EXTERNAL DRIP FLASHING

COATING - PROTEX APPROVED
 GAUGE - 0.7mm
 JOINTS BUTT STRAPPED AND FULLY SEALED WITH BUTYL TAPE AND FRONT FACE RIVETED AT 100mm CENTRES

PROTEX APPROVED - EXTERNAL SOFFIT FLASHING

COATING - PROTEX APPROVED
 GAUGE - 0.7mm
 JOINTS FULLY SEALED WITH BUTYL TAPE
 IF REQUIRED WEEP HOLES CAN BE INSTALLED TO ALLOW FREE DRAINAGE OF WATER

N1000L+ INTERNAL LINER PROFILE

GAUGE - 0.4mm
 COATING - BRIGHT WHITE LINER

PROTEX APPROVED - INTERNAL CLOSURE FLASHING

COATING - BRIGHT WHITE LINER
 GAUGE - 0.7mm

RIGID INSULATION BY OTHERS

SHUTTER DOOR BY OTHERS

5mm GAP

Z GALV ANGLE
 GAUGE - 1.6mm
 FIXED BACK INTO STEELWORK

SHUTTER DOOR JAMB DETAIL

PROTEX APPROVED - SPACER SYSTEM

BRACKET DEPTH TO SUIT U-VALUE CALCULATIONS
 MINIMUM DEPTH 120mm
PATTERN
 MAX CLADDING RAIL CENTRE'S 1800mm
 VERTICAL BAR CENTRE'S TYPICALLY 1600mm
 VERTICAL BAR CENTRE'S TO SUIT LOADING CALCULATIONS

PROTEX APPROVED - BRACKET FIXING

STAINLESS STEEL SELF DRILLING & SELF TAPPING
 16mm Ø EDPM WASHER
PATTERN
 AS PER LAYOUT CALCULATION

PROTEX APPROVED - LINER SIDE LAP SEALANT

50mm * 1mm BUTYL TAPE
LOCATION
 1-NO. CONTINUOUS RUN.
 POSITIONED CENTRAL OVER JOINT

PROTEX APPROVED - GLASS FIBRE INSULATION

THICKNESS TO SUIT U-VALUE REQUIREMENT
 MINIMUM THICKNESS - 120mm
 FIRE CLASS A1 RATED TO EN 13501-1
 MANUFACTURED IN ACCORDANCE WITH BS EN 13162
 (SUGGESTED THICKNESS TO BE >10% THAN SPACER SYSTEM DEPTH)

N14/3 SINUS EXTERNAL WALL PROFILE
 GAUGE - 0.7mm
 COATING - PROTEX APPROVED

PROTEX APPROVED - EXTERNAL JAMB FLASHING STITCHER FIXINGS
 STAINLESS STEEL SELF DRILLING / SELF TAPPING / BULB-TITE RIVET
 PAINTED / MOULDED HEAD
 16mm Ø EDPM WASHER
PATTERN
 450mm CENTRES

PROTEX APPROVED - EXTERNAL JAMB FLASHING
 COATING - PROTEX APPROVED
 GAUGE - 0.7mm

INSTALLATION NOTES

- FLASHING JOINTS SEALED WITH BUTYL
- FLASHING JOINTS FIXED AT 100mm CENTRES (RIVET OR STITCH)
- FLASHINGS FIXED AT 450mm CENTRES
- BRACKET MUST BE POSITIONED WITHIN 100mm OF END OF BAR OR MALE END JOINT
- NO IMPACT DRIVERS OR CLUTCHLESS DRILLS
- NO CARBON FIXINGS

| REV | DATE | DESCRIPTION |
|-----|------|-------------|
| | | |



Firth Steels Ltd, Calderbank, River Street, Brighouse, West Yorkshire HD6 1LU
 Technical@firth-steels.co.uk +44 1484 405940 Firth-steels.co.uk



This draft drawing has been supplied by Firth Steels Ltd for guidance purposes only and is provided free of charge. It represents a suggested typical detail and should not be assumed as suitable for any specific project or application. It is essential to read this in conjunction with the Protex System specification documents to ensure completeness of information. Please note, no responsibility is assumed for errors or misinterpretations resulting from the information contained within this drawing. Details depicted are for illustration purposes only, and no liability is accepted for their use. Firth Steels reserves the right to modify details without notice. This drawing is the property of Firth Steels Ltd, any reproduction without explicit written consent is prohibited. Firth Steels is committed to ongoing improvement. The details and data shared in this document are reflective of the current state as of the issue date. It is the duty of the recipients to ensure that the information in this document is still up-to-date at the time of its use.

Drawing Number
Protex-WS04-7 Shutter Door Detail

| | | |
|-----------------------|-------------------------|---------------------------|
| Drawn by KP | Checked by TO | Date 24/09/2024 |
|-----------------------|-------------------------|---------------------------|

| | | |
|-----------------------------------|-------------------|----------------------|
| Project Title PRX-WS-04 | Size A3 | Revision A |
|-----------------------------------|-------------------|----------------------|

<<< DO NOT SCALE FROM THIS DRAWING >>>

LOUVRE HEADER & CILL DETAIL

PROTEX APPROVED - SPACER SYSTEM (HORIZONTAL BASE BAR)

BRACKET DEPTH TO SUIT U-VALUE CALCULATIONS
 MINIMUM DEPTH 120mm
PATTERN
 MAX CLADDING RAIL CENTRE'S 1800mm
 MAX BRACKET CENTRE'S 1000mm
 BRACKET CENTRE'S TO SUIT LOADING CALCULATIONS
 HORIZONTAL BAR AT THE BASE DETAIL WITH AFT CONNECTIONS TO CONNECT TO THE VERTICAL BARS
 BRACKET MUST BE PLACED WITHIN 100mm OF MALE END OF SPACER SYSTEM JOINT

PROTEX APPROVED - EXTERNAL DRIP FLASHING

COATING - PROTEX APPROVED
 GAUGE - 0.7mm
 JOINTS BUTT STRAPPED AND FULLY SEALED WITH BUTYL TAPE AND FRONT FACE RIVETED AT 100mm CENTRES

PROTEX APPROVED - SPACER SYSTEM

BRACKET DEPTH TO SUIT U-VALUE CALCULATIONS
 MINIMUM DEPTH 120mm
PATTERN
 MAX CLADDING RAIL CENTRE'S 1800mm
 VERTICAL BAR CENTRE'S TYPICALLY 1600mm
 VERTICAL BAR CENTRE'S TO SUIT LOADING CALCULATIONS

PROTEX APPROVED - EXTERNAL FLASHING STITCHER FIXINGS

STAINLESS STEEL SELF DRILLING & SELF TAPPING
 PAINTED / MOULDED HEAD
 16mm Ø EDPM WASHER
PATTERN
 450mm CENTRES

N14/3 SINUS EXTERNAL WALL PROFILE

GAUGE - 0.7mm
 COATING - PROTEX APPROVED

N1000L+ INTERNAL LINER PROFILE

GAUGE - 0.4mm
 COATING - BRIGHT WHITE LINER

AFT CONNECTORS

USED TO SECURE VERTICAL BARS TO HORIZONTAL SPACER SYSTEM

LOUVRE BY OTHERS

FIXED BACK INTO STEELWORK AND SEALED TRIMMING STEEL IF REQUIRED

PROTEX APPROVED - GLASS FIBRE INSULATION

THICKNESS TO SUIT U-VALUE REQUIREMENT
 MINIMUM THICKNESS - 120mm
 FIRE CLASS A1 RATED TO EN 13501-1
 MANUFACTURED IN ACCORDANCE WITH BS EN 13162
 (SUGGESTED THICKNESS TO BE >10% THAN SPACER SYSTEM DEPTH.)

LOUVRE JAMB DETAIL

ADDITIONAL VERTICAL BAR RUNS IF REQUIRED

AT END OF TOP SHEET, BRACKETS WITHIN FIRST LINER TROUGH

PROTEX APPROVED - LINER SIDE LAP SEALANT

50mm * 1mm BUTYL TAPE
LOCATION
 1-NO. CONTINUOUS RUN. POSITIONED CENTRAL OVER JOINT

PROTEX APPROVED - EXTERNAL FLASHING STITCHER FIXINGS

SELF DRILLING / SELF TAPPING
 PAINTED / MOULDED HEAD
 16mm Ø EDPM WASHER
PATTERN
 450mm CENTRES

LOUVRE HEADER & CILL DETAIL

OPENINGS <300mm

LOUVRE JAMB DETAIL

OPENINGS <300MM

PROTEX APPROVED - INTERNAL FLASHING STITCHER FIXINGS

STAINLESS STEEL SELF DRILLING / SELF TAPPING / BULB-TITE RIVET
 PAINTED / MOULDED HEAD
 16mm Ø EDPM WASHER
PATTERN
 450mm CENTRES

PROTEX APPROVED - FOAM FILLER

PROFILE - N1000L+
 COLOUR - WHITE

LOUVRE BY OTHERS

MAX 300MM OPENING

PROTEX APPROVED - FOAM FILLER SEALANT

GUN GRADE BUTYL
 APPROX 4mm Ø BEAD
LOCATION
 CONTINUOUS RUNS TOP & BOTTOM OF FOAM FILLER

HORIZONTAL BAR / GALV RUN

FIXED ONTO VERTICAL BARS, ABOVE AND BELOW LOUVRE OPENING
GALV ANGLES FITTED TO VERTICAL BARS
 GAUGE - 1.6mm

PROTEX APPROVED - SPACER SYSTEM

BRACKET DEPTH TO SUIT U-VALUE CALCULATIONS
 MINIMUM DEPTH 120mm
PATTERN
 MAX CLADDING RAIL CENTRE'S 1800mm
 VERTICAL BAR CENTRE'S TYPICALLY 1600mm
 VERTICAL BAR CENTRE'S TO SUIT LOADING CALCULATIONS

ADDITIONAL VERTICAL BAR RUNS IF REQUIRED

AT END OF TOP SHEET, BRACKETS WITHIN FIRST LINER TROUGH

INSTALLATION NOTES

- FLASHING JOINTS SEALED WITH BUTYL
- FLASHING JOINTS FIXED AT 100mm CENTRES (RIVET OR STITCH)
- FLASHINGS FIXED AT 450mm CENTRES
- BRACKET MUST BE POSITIONED WITHIN 100mm OF END OF BAR OR MALE END JOINT
- NO IMPACT DRIVERS OR CLUTCHLESS DRILLS
- NO CARBON FIXINGS

| REV | DATE | DESCRIPTION |
|-----|------|-------------|
| | | |



Firth Steels Ltd, Calderbank, River Street, Brighouse, West Yorkshire HD6 1LU
 Technical@firth-steels.co.uk +44 1484 405940 Firth-steels.co.uk



This draft drawing has been supplied by Firth Steels Ltd for guidance purposes only and is provided free of charge. It represents a suggested typical detail and should not be assumed as suitable for any specific project or application. It is essential to read this in conjunction with the Protex System specification documents to ensure completeness of information. Please note, no responsibility is assumed for errors or misinterpretations resulting from the information contained within this drawing. Details depicted are for illustration purposes only, and no liability is accepted for their use. Firth Steels reserves the right to modify details without notice. This drawing is the property of Firth Steels Ltd, any reproduction without explicit written consent is prohibited. Firth Steels is committed to ongoing improvement. The details and data shared in this document are reflective of the current state as of the issue date. It is the duty of the recipients to ensure that the information in this document is still up-to-date at the time of its use.

Drawing Number
Protex-WS04-8 Louvre

Drawn by
KP

Checked by
TO

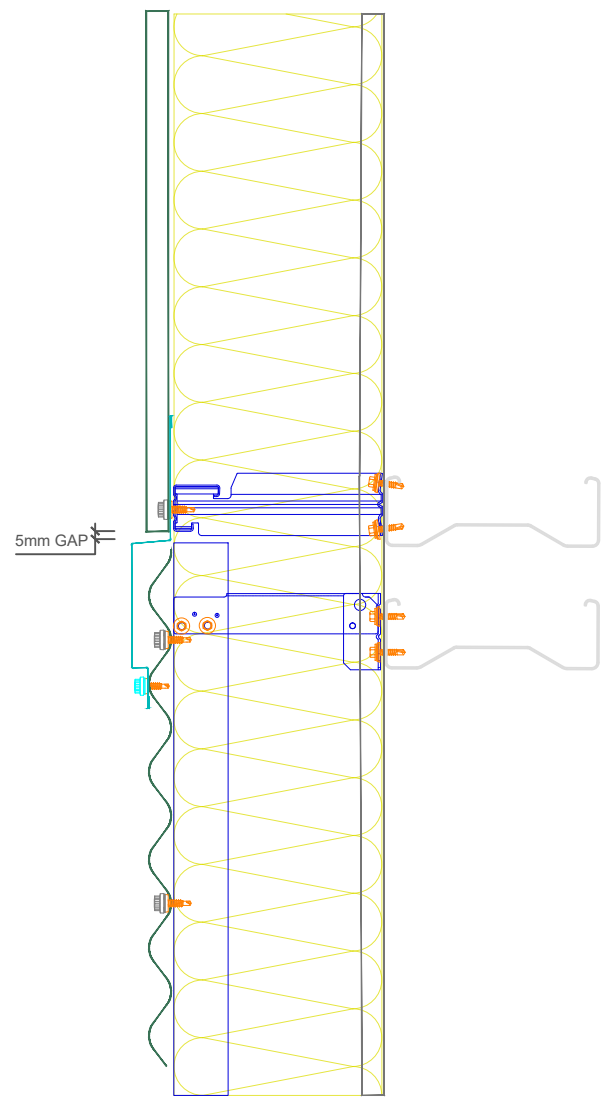
Date
24/09/2024

Project Title
PRX-WS-04

Size
A3

Revision
A

<<< DO NOT SCALE FROM THIS DRAWING >>>



PRX-WS-03 WALL SYSTEM

PROTEX APPROVED - EXTERNAL FLASHING
 COATING - PROTEX APPROVED
 GAUGE - 0.7mm
 JOINTS FULLY SEALED WITH BUTYL TAPE

PROTEX APPROVED - EXTERNAL FLASHING STITCHER FIXINGS
 STAINLESS STEEL SELF DRILLING & SELF TAPPING
 PAINTED / MOULDED HEAD
 16mm Ø EDPM WASHER
PATTERN
 450mm CENTRES

PROTEX APPROVED - EXTERNAL MAIN FIXING
 STAINLESS STEEL SELF DRILLING & SELF TAPPING
 PAINTED / MOULDED HEAD
 19mm Ø EDPM WASHER
PATTERN
 SHEET ENDS - EVERY 3 NO. TROUGHS - 5 NO.
FIXINGS
 INTERMEDIATE SUPPORTS - EVERY 3 NO.
 TROUGHS - 5 NO. **FIXINGS**

N14/3 SINUS EXTERNAL WALL PROFILE
 GAUGE - 0.7mm
 COATING - PROTEX APPROVED

PROTEX APPROVED - SPACER SYSTEM
 BRACKET DEPTH TO SUIT U-VALUE CALCULATIONS
 MINIMUM DEPTH 120mm
PATTERN
 MAX CLADDING RAIL CENTRE'S 1800mm
 VERTICAL BAR CENTRE'S TYPICALLY 1600mm
 VERTICAL BAR CENTRE'S TO SUIT LOADING CALCULATIONS

PROTEX APPROVED - BRACKET FIXING
 STAINLESS STEEL SELF DRILLING & SELF TAPPING
 16mm Ø EDPM WASHER
PATTERN
 AS PER LAYOUT CALCULATION

N1000L+ INTERNAL LINER PROFILE
 GAUGE - 0.4mm
 COATING - BRIGHT WHITE LINER

PROTEX APPROVED - GLASS FIBRE INSULATION
 THICKNESS TO SUIT U-VALUE REQUIREMENT
 MINIMUM THICKNESS - 120mm
 FIRE CLASS A1 RATED TO EN 13501-1
 MANUFACTURED IN ACCORDANCE WITH BS EN 13162
 (SUGGESTED THICKNESS TO BE >10% THAN SPACER SYSTEM DEPTH.)

- INSTALLATION NOTES**
- FLASHING JOINTS SEALED WITH BUTYL
 - FLASHING JOINTS FIXED AT 100mm CENTRES (RIVET OR STITCH)
 - FLASHINGS FIXED AT 450mm CENTRES
 - BRACKET MUST BE POSITIONED WITHIN 100mm OF END OF BAR OR MALE END JOIN
 - NO IMPACT DRIVERS OR CLUTCHLESS DRILLS
 - NO CARBON FIXINGS

| REV | DATE | DESCRIPTION |
|-----|------|-------------|
| | | |

FirthSteels[®]
 Firth Steels Ltd, Calderbank, River Street, Brighouse, West Yorkshire HD6 1LU
 Technical@firth-steels.co.uk +44 1484 405940 Firth-steels.co.uk

PROTEX[®]

UK CA

LPS 1181 Curt/LPCB ref. 1611a

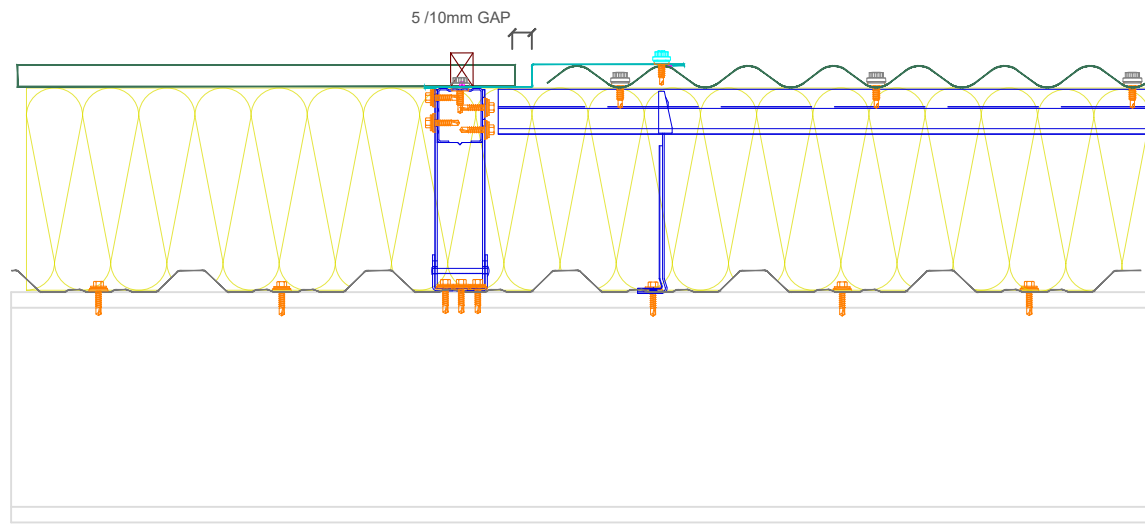
This draft drawing has been supplied by Firth Steels Ltd for guidance purposes only and is provided free of charge. It represents a suggested typical detail and should not be assumed as suitable for any specific project or application. It is essential to read this in conjunction with the Protex System specification documents to ensure completeness of information. Please note, no responsibility is assumed for errors or misinterpretations resulting from the information contained within this drawing. Details depicted are for illustration purposes only, and no liability is accepted for their use. Firth Steels reserves the right to modify details without notice. This drawing is the property of Firth Steels Ltd, any reproduction without explicit written consent is prohibited. Firth Steels is committed to ongoing improvement. The details and data shared in this document are reflective of the current state as of the issue date. It is the duty of the recipients to ensure that the information in this document is still up-to-date at the time of its use.

Drawing Number
Protex-WS04-9 Horizontal to Vertical Above

| | | |
|----------------|------------------|--------------------|
| Drawn by KP | Checked by TO | Date 24/09/2024 |
|----------------|------------------|--------------------|

| | | |
|----------------------------|------------|---------------|
| Project Title PRX-WS-02 | Size A3 | Revision A |
|----------------------------|------------|---------------|

<<< DO NOT SCALE FROM THIS DRAWING >>>



PROTEX APPROVED - VENTED FOAM FILLER SEALANT
 GUN GRADE BUTYL
 APPROX 4mm Ø BEAD
LOCATION
 1-NO. CONTINUOUS RUN AT BASE OF FOAM FILLER

PROTEX APPROVED - VENTED FOAM FILLER
 PROFILE - N14/3 SINUS
 COLOUR - BLACK
 VENTED AT TOP OF FILLER

PROTEX APPROVED - EXTERNAL FLASHING
 COATING - PROTEX APPROVED
 GAUGE - 0.7mm
 JOINTS FULLY SEALED WITH BUTYL TAPE

PROTEX APPROVED - EXTERNAL FLASHING STITCHER FIXINGS
 STAINLESS STEEL SELF DRILLING / SELF TAPPING
 PAINTED / MOULDED HEAD
 16mm Ø EDPM WASHER
PATTERN
 450mm CENTRES

PROTEX APPROVED - FLASHING SEALANT
 9mm * 3mm BUTYL TAPE / 4mm BEAD
LOCATION
 1-NO. CONTINUOUS RUN POSITIONED WEATHER SIDE OF FIXING

PROTEX APPROVED - EXTERNAL MAIN FIXING
 STAINLESS STEEL SELF DRILLING & SELF TAPPING
 PAINTED / MOULDED HEAD
 19mm Ø EDPM WASHER
PATTERN
 SHEET ENDS - EVERY 3 NO. TROUGHS - 5 NO. FIXINGS
 INTERMEDIATE SUPPORTS - EVERY 3 NO. TROUGHS - 5 NO. FIXINGS

N14/3 SINUS EXTERNAL WALL PROFILE
 GAUGE - 0.7mm
 COATING - PROTEX APPROVED

PROTEX APPROVED - GLASS FIBRE INSULATION
 THICKNESS TO SUIT U-VALUE REQUIREMENT
 MINIMUM THICKNESS - 120mm
 FIRE CLASS A1 RATED TO EN 13501-1
 MANUFACTURED IN ACCORDANCE WITH BS EN 13162
 (SUGGESTED THICKNESS TO BE >10% THAN SPACER SYSTEM DEPTH.)

N1000L+ INTERNAL LINER PROFILE
 GAUGE - 0.4mm
 COATING - BRIGHT WHITE LINER

PROTEX APPROVED - SPACER SYSTEM
 BRACKET DEPTH TO SUIT U-VALUE CALCULATIONS
 MINIMUM DEPTH 120mm
PATTERN
 MAX CLADDING RAIL CENTRE'S 1800mm
 VERTICAL BAR CENTRE'S TYPICALLY 1600mm
 VERTICAL BAR CENTRE'S TO SUIT LOADING CALCULATIONS

PROTEX APPROVED - BRACKET FIXING
 STAINLESS STEEL SELF DRILLING & SELF TAPPING
 16mm Ø EDPM WASHER
PATTERN
 AS PER LAYOUT CALCULATION

PRX-WS-03 WALL SYSTEM

- INSTALLATION NOTES**
- FLASHING JOINTS SEALED WITH BUTYL
 - FLASHING JOINTS FIXED AT 100mm CENTRES (RIVET OR STITCH)
 - FLASHINGS FIXED AT 450mm CENTRES
 - BRACKET MUST BE POSITIONED WITHIN 100mm OF END OF BAR OR MALE END JOIN
 - NO IMPACT DRIVERS OR CLUTCHLESS DRILLS
 - NO CARBON FIXINGS

| REV | DATE | DESCRIPTION |
|-----|------|-------------|
| | | |

FirthSteels[®]
 Firth Steels Ltd, Calderbank, River Street, Brighouse, West Yorkshire HD6 1LU
 Technical@firth-steels.co.uk +44 1484 405940 Firth-steels.co.uk

SGS
 SGS
 SGS
 UKAS
 PlanetMark

PROTEX[®]

UK
 CA

LPCB
 UKAS
 LPS 1181 Cert/LPCB ref. 1611a

This draft drawing has been supplied by Firth Steels Ltd for guidance purposes only and is provided free of charge. It represents a suggested typical detail and should not be assumed as suitable for any specific project or application. It is essential to read this in conjunction with the Protex System specification documents to ensure completeness of information. Please note, no responsibility is assumed for errors or misinterpretations resulting from the information contained within this drawing. Details depicted are for illustration purposes only, and no liability is accepted for their use. Firth Steels reserves the right to modify details without notice. This drawing is the property of Firth Steels Ltd, any reproduction without explicit written consent is prohibited. Firth Steels is committed to ongoing improvement. The details and data shared in this document are reflective of the current state as of the issue date. It is the duty of the recipients to ensure that the information in this document is still up-to-date at the time of its use.

Drawing Number
Protex-WS04-10 Horizontal to Vertical Adjacent

| | | |
|----------------|------------------|--------------------|
| Drawn by KP | Checked by TO | Date 24/09/2024 |
|----------------|------------------|--------------------|

| | | |
|----------------------------|------------|---------------|
| Project Title PRX-WS-04 | Size A3 | Revision A |
|----------------------------|------------|---------------|

<<< DO NOT SCALE FROM THIS DRAWING >>>